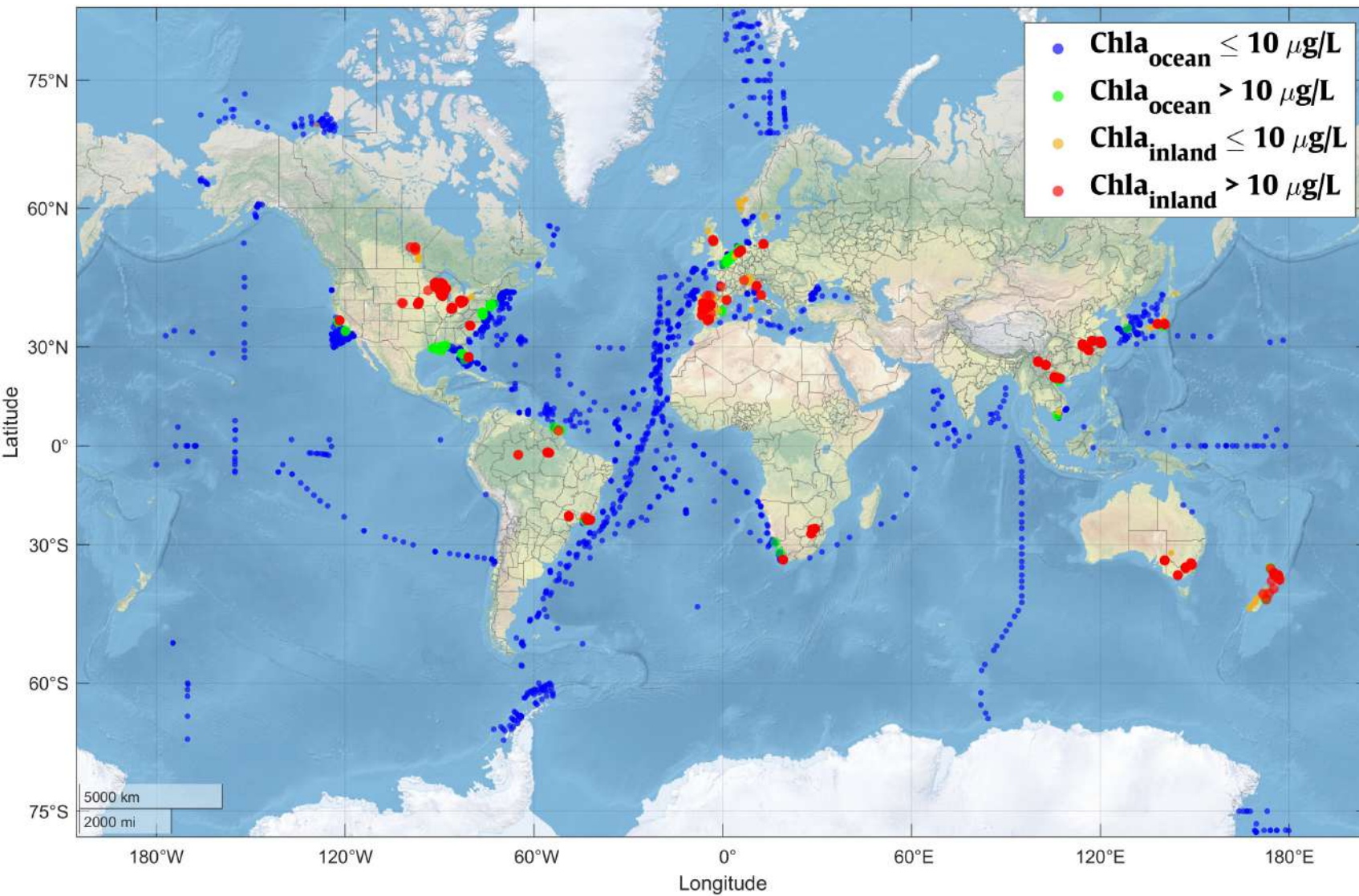
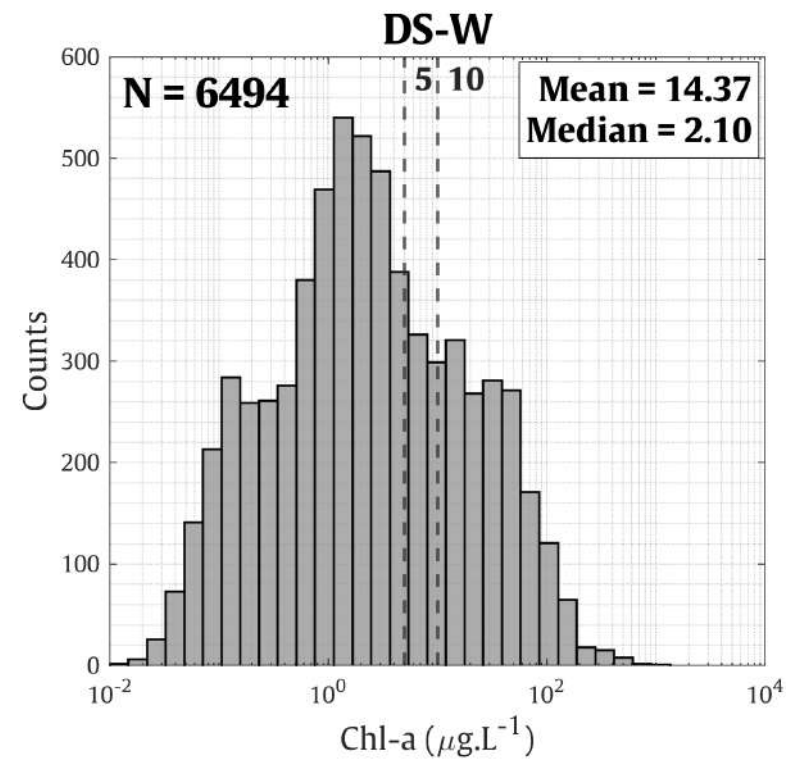


Projet en cours V. Vantrepotte, LOG

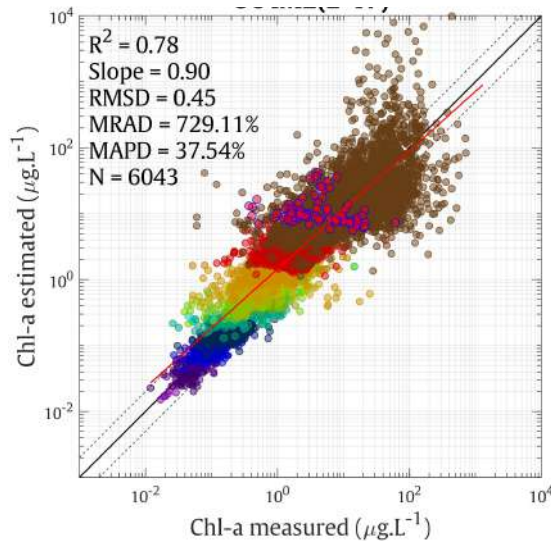
- OCIMP EUMETSAT (LOG, Brockmann, AWI)—> Chla Sentinel3
- COCOBRAZ ANR PRCI (LOG, INPE): Evolution de la qualité biogéochimiques des eaux Brésiliennes 2 PhD
→ POC, SPM, Chla
- PPR Futurobs: Exploitation des données ODATIS, caractérisation des variations long terme (phénologie, tendances) Chla, SPM, POC, DOC dans les eaux françaises (1 post doc 2024-2025)
- PEPR Faircarbon (MNHN, LOG, EPOC, IGE, Univ. Angers: Carbon fluxes in mangroves and tropical estuaries (2024-2028) (Chla, SP, POC, DOC, pCO₂) (1 post doc 2025-2026)



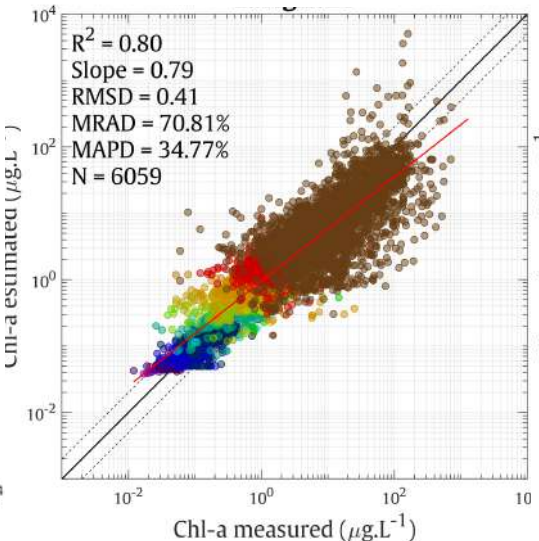
Global Dataset of Radiometric & Chl-a measurements (DS-W)



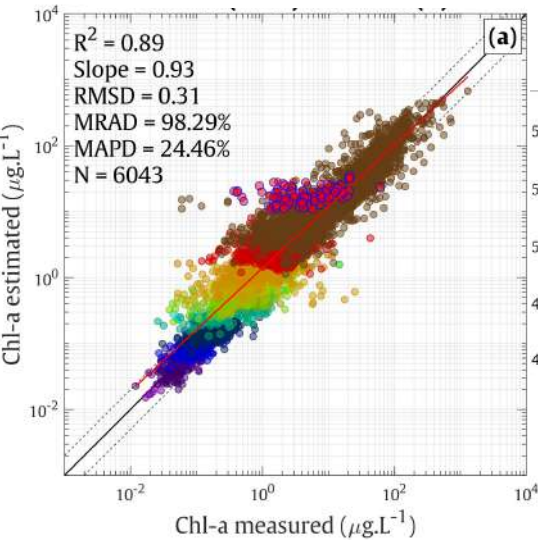
Standard



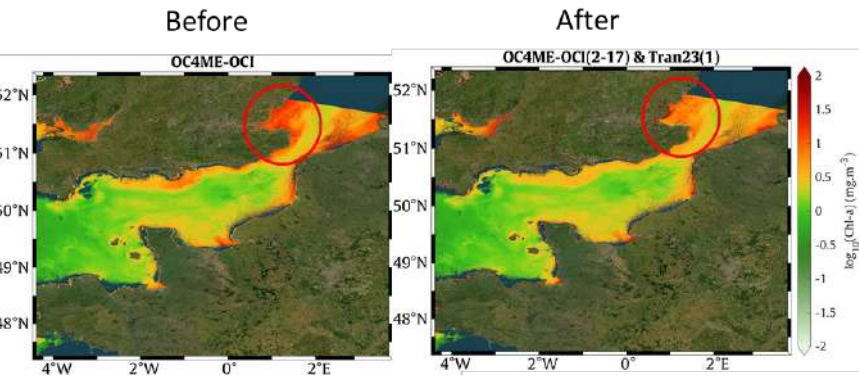
Lavigne et al., 2021



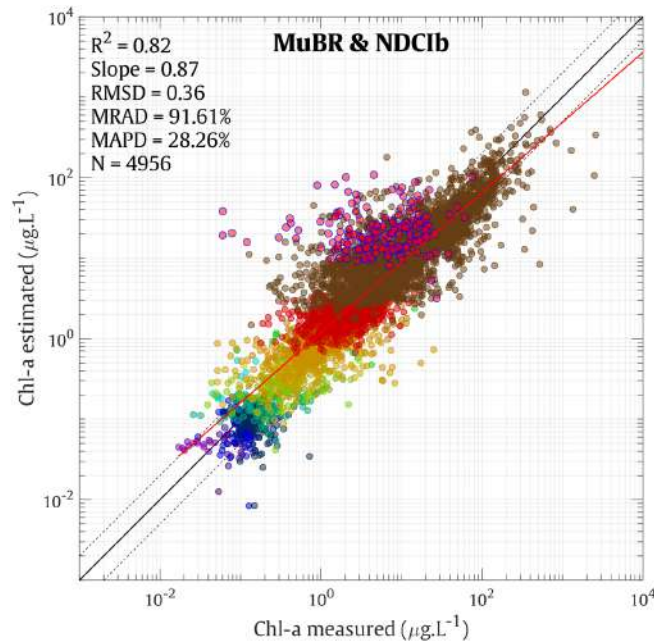
New model



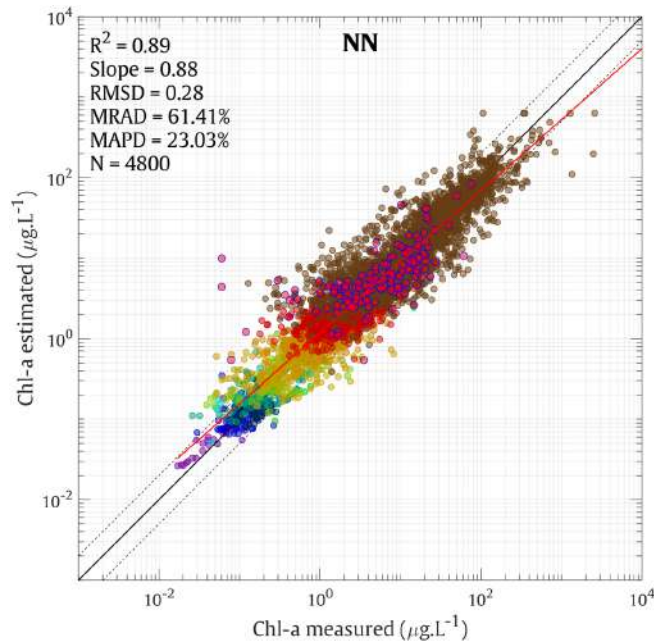
S3 Chla improvement



Band ratio combination



Neural net



MODIS Chla improvement

