



Synergies SWOT – Ocean Color

Some examples from on-going work at LOCEAN

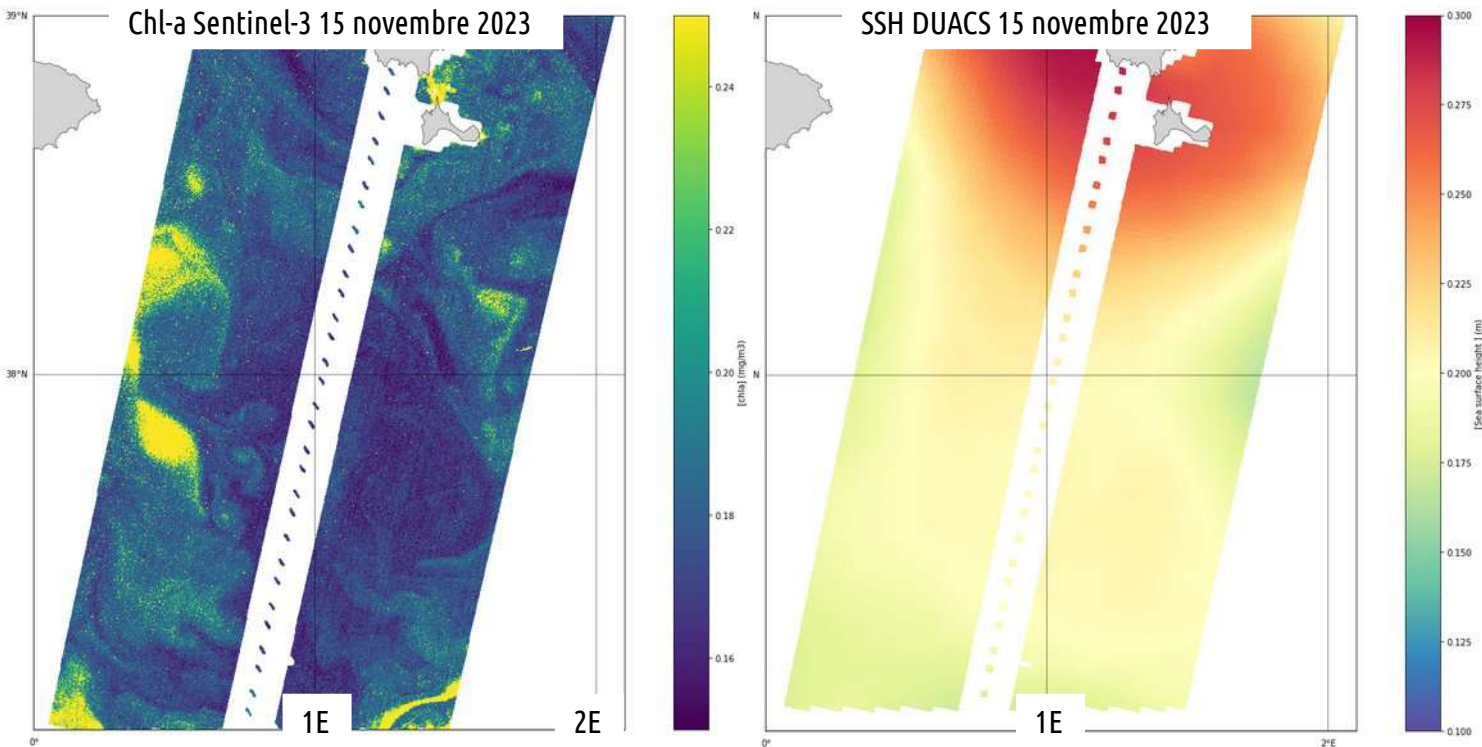
- SWOT CalVal : is the ~1-10km signal from the ocean ? How SSH can inform on (a)geostrophic submesoscale processes ?
- Fine scale studies : dynamics, life cycle, and biogeochemical effect of submesoscale features

PhD project Alex Nalivaev

M2 project Chloé Goret

Francesco d'Ovidio, CNRS LOCEAN-IPSL

M2 Chloé Goret (very) fine scales in the Mediterranean sea



M2 Chloé Goret

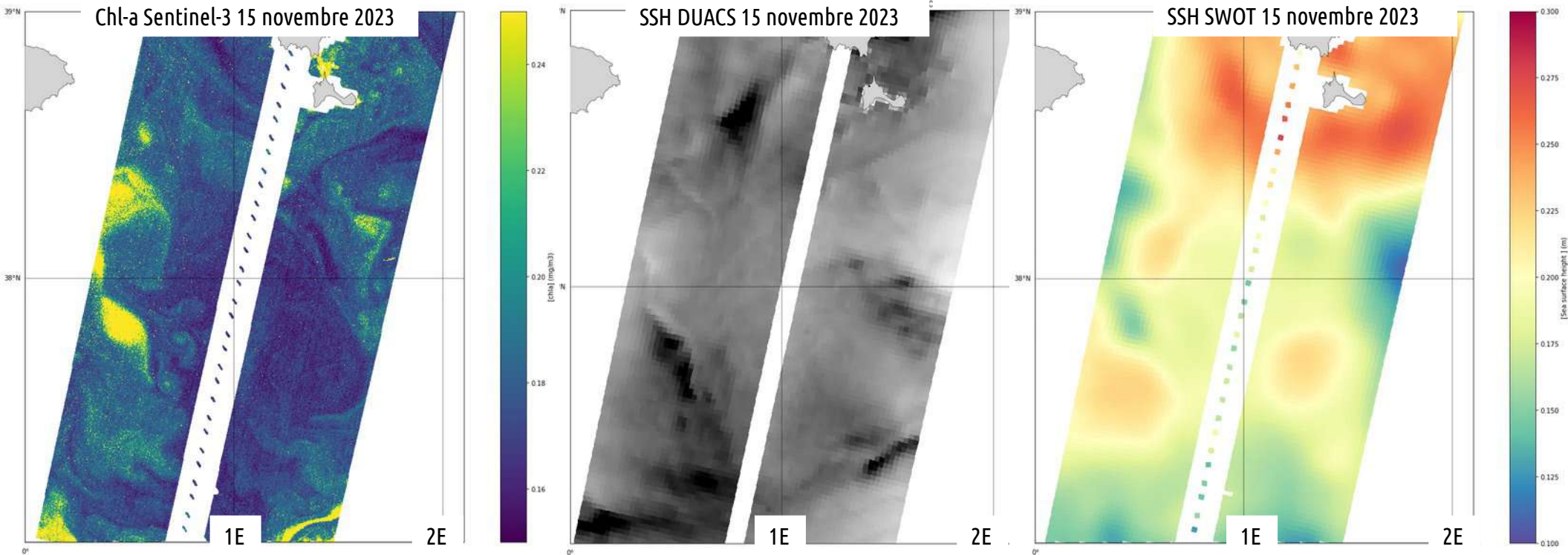
(very) fine scales in the Mediterranean sea

Most of the submesoscale features have a signature on the SSH and $\sigma_{\theta 0}$

Few hours of S3-SWOT mismatch lead to spatial incoherence

Possibility with SWOT to follow their life cycle at daily interval (fast-sampling phase) !

Strong interest for 250m maps



M2 Chloé Goret

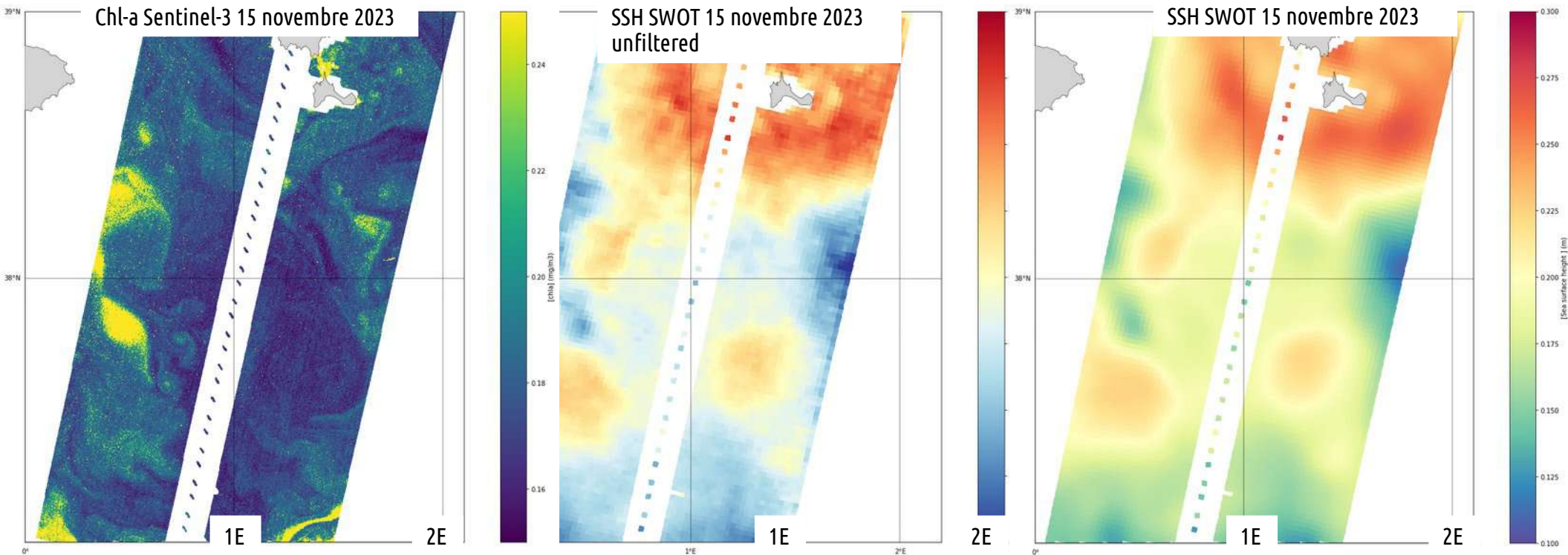
(very) fine scales in the Mediterranean sea

Most of the submesoscale features have a signature on the SSH and sigma0

Few hours of S3-SWOT mismatch lead to spatial incoherence

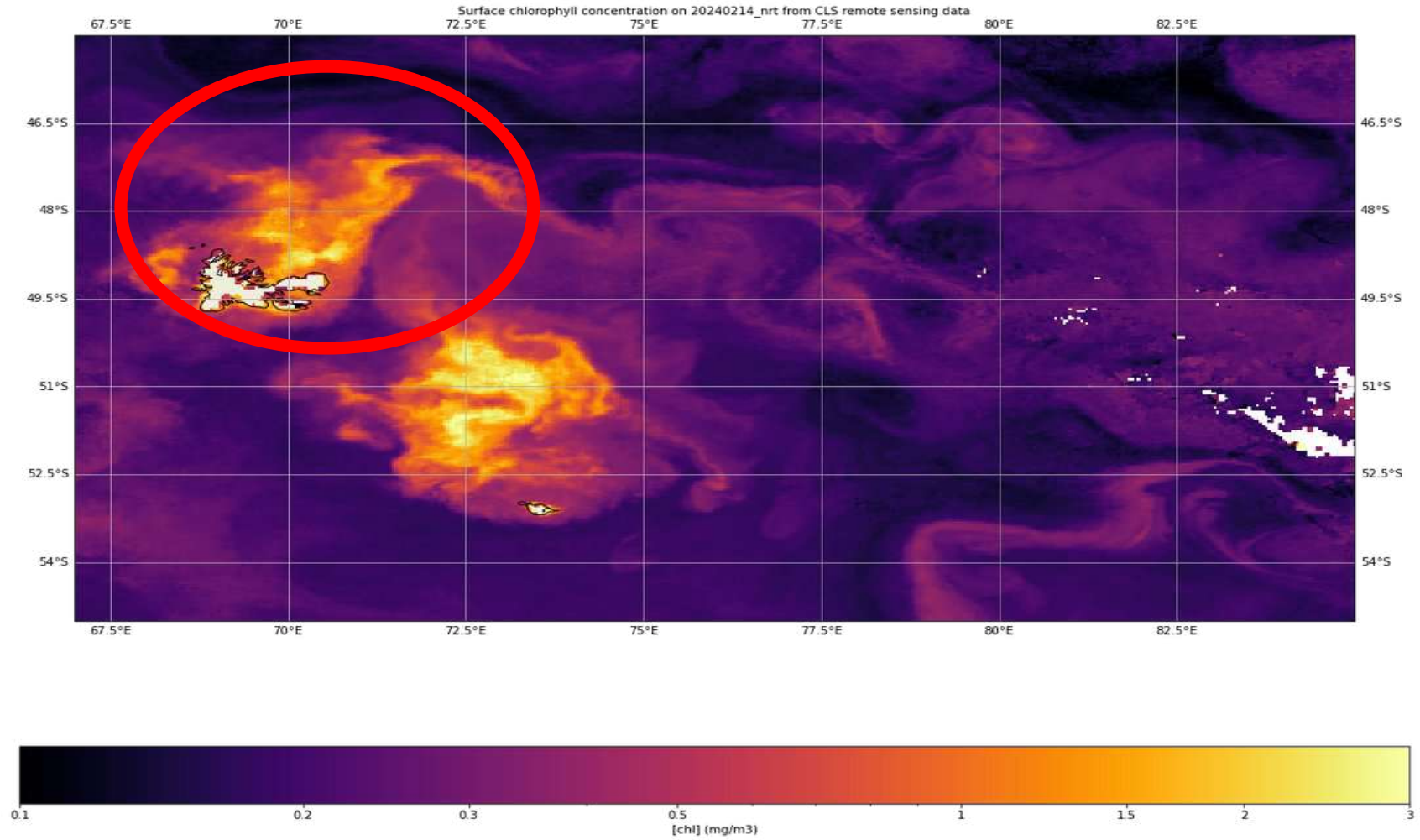
Possibility with SWOT to follow their life cycle at daily interval (fast-sampling phase) !

Strong interest for 250m maps



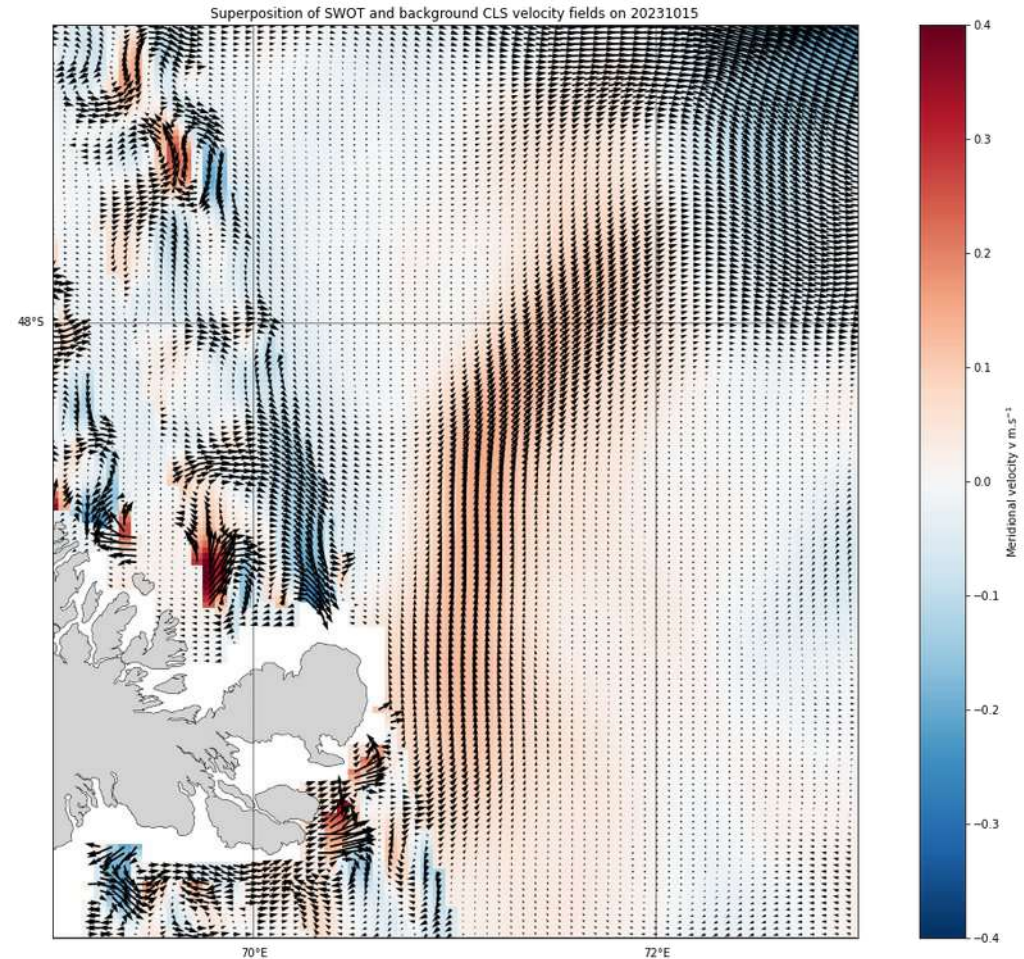
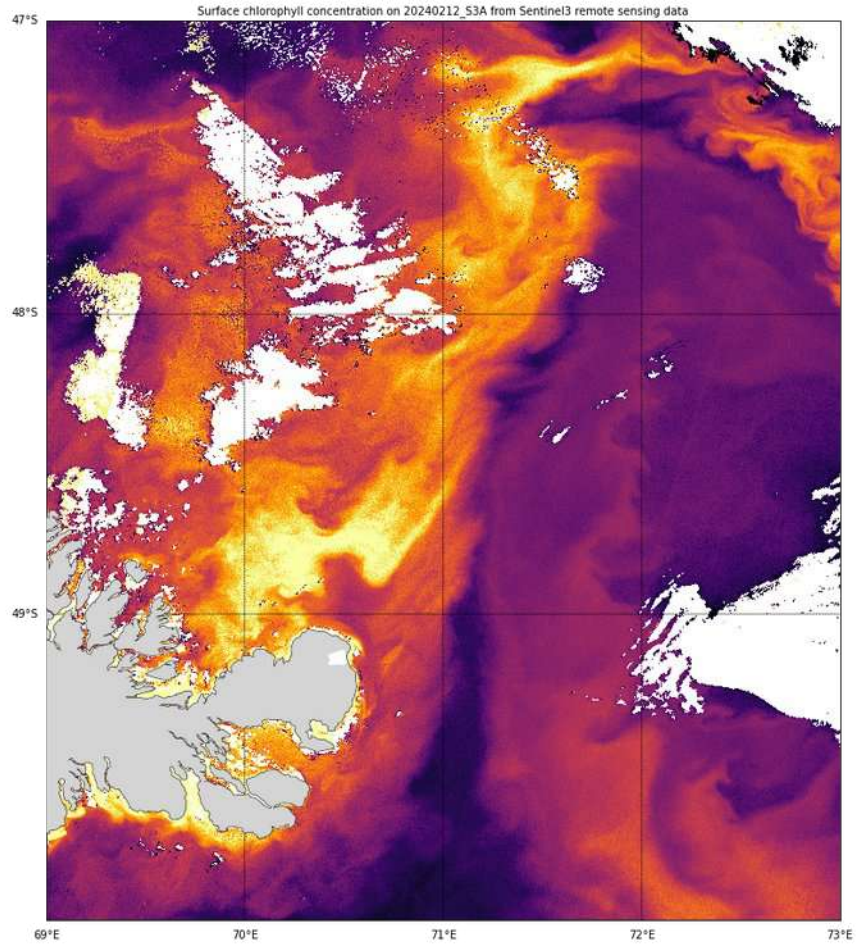
PhD Alex Nalivaev

Coast-to-large iron delivery from Kerguelen glacier (ANR MARGO, PI : S. Blain)



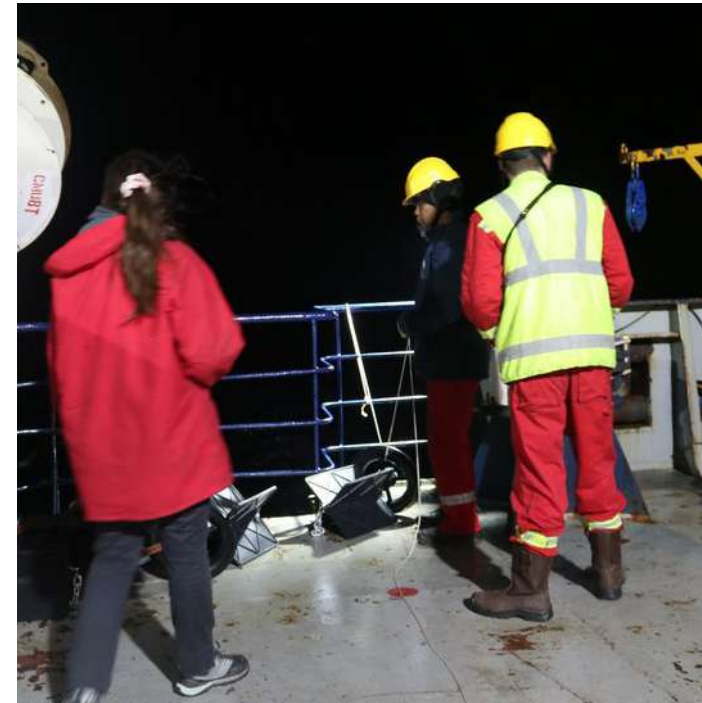
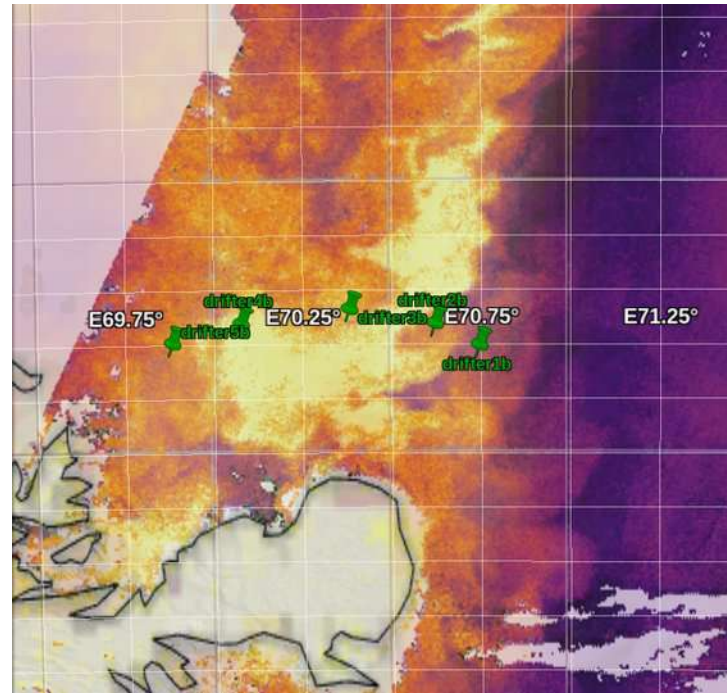
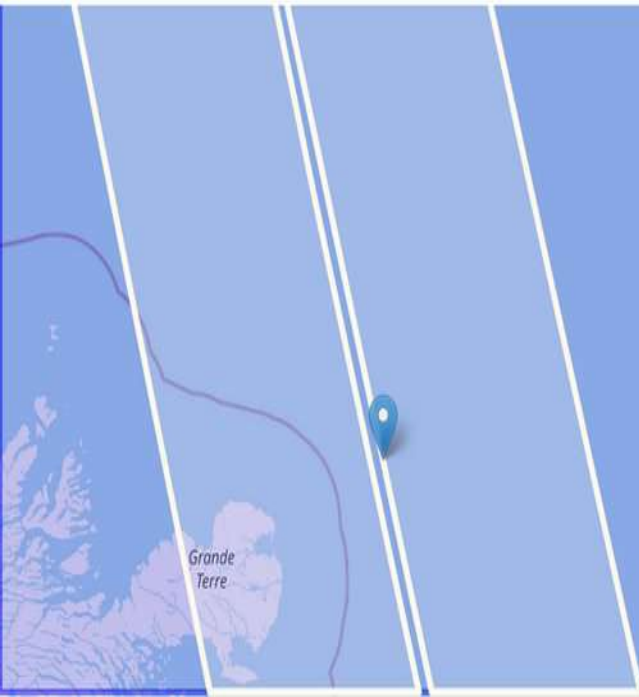
PhD Alex Nalivaev

NE connection visible in S3, absent in DUACS,.. possibly (MDT?) present in SWOT !



PhD Alex Nalivaev

Tracking swaths critically useful for in situ campaigns (thanks for the tool!)
SWOT analysis to come..



PhD Alex Nalivaev

Are on-swath Lagrangian methods feasible during the Science Phase ? Or only on MIOST-like products ?

