



Landsat

Landsat, a joint program of the USGS and NASA, has been observing the Earth continuously from 1972 through the present day. Today the Landsat satellites image the entire Earth's surface at a 30-meter resolution about once every two weeks, including multispectral and thermal data.

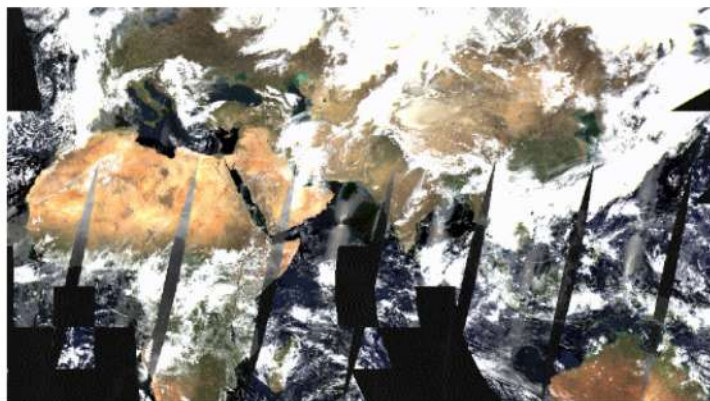
[Explore Landsat](#)



Sentinel

The Copernicus Program is an ambitious initiative headed by the European Commission in partnership with the European Space Agency (ESA). The Sentinels include all-weather radar from Sentinel-1A and -1B, high-resolution optical images from Sentinel 2A and 2B, as well as land data suitable for environmental and climate monitoring from Sentinel 3.

[Explore Sentinel](#)



MODIS

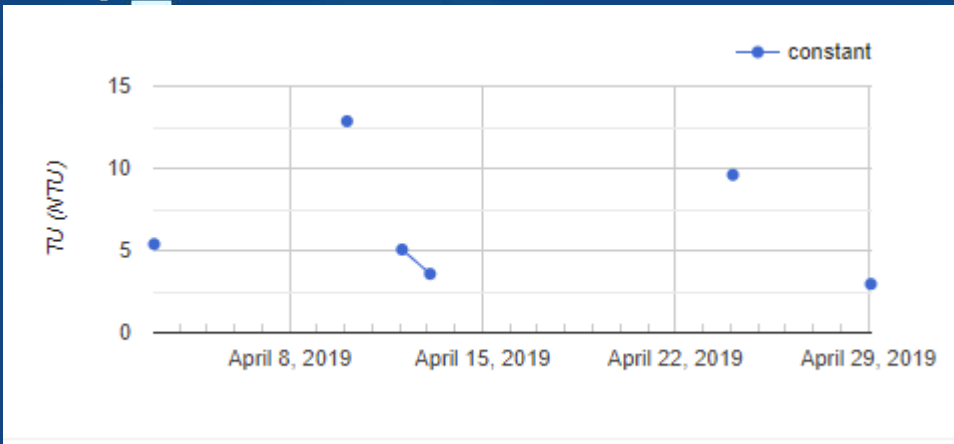


HR

- Algorithmes 'standards' multi-capteurs
- Couverture globale
- Séries temporelles complètes

```
script final master *
  Imports (6 entries)
  var geometry1: Table users/boubakerekilani/limite
  var D: ImageCollection "Ocean Color SMI: Standard Mapped Image MODIS Aqua Data"
  var imageVisParam: constant_mean to 0
  var geometry: Polygon, 4 vertices
  var geometry2: Point (-1.45, 45.61)
  var geometry3: Polygon, 4 vertices

1 //filtrage et découpage de zone d'étude
2 var T = D.filterBounds(geometry3)
3 print(T)
4 print(T.size())
5 var S = T.filterDate('2019-04-01', '2019-04-30')
6 print(S.size())
7 var image = S.select('sst')
8 function clip(image){
9   return image.clip(geometry1)
10 var SSTcollection = S.map(clip);
11 print(SSTcollection);
12 //Map.addLayer(SSTcollection)
13 //courbe de ttemperature 2018
14 var TEMPERATURE = SSTcollection.select(['sst'])
15 var series1 = ui.Chart.image.series(
16 TEMPERATURE, geometry1, ee.Reducer.mean(), 500);
17 series1.setOptions({title: '',
18 vAxis: {title: 'SST(°C)',
19   lineWidth: 2,
20   pointSize: 0,}})
21 series1.setChartType('ScatterChart')
22 print(series1)
23 //valeur moyenne de ttemperature GEOTIF
24 var meanTEM = TEMPERATURE.reduce(ee.Reducer.mean())
25 print(meanTEM)
26 //Map.addLayer(meanTEM)
27 // COURBE DE CHLOROPHYLE 2018
28 var image2 = S.select('chlor a')
```



- Produit généré en <1mn (un mois)
- Un année de produits : 4 mn

**Composite mensuel (moyenne)
turbidité / Avril 2019
MODIS-Aqua / 500 m**

